

**XF-8006A/B****1. Specification**

Filter Type:	Two 8-Pol Filters cascaded
Centre frequency (fc):	8.006 MHz
Bandwidth at 4 dB \pm 2dB:	\pm 1.7 kHz
Ripple in the range of fc \pm 1.3 kHz:	\leq 2 dB
Insertion loss per Filter (measured at the min.attenuation):	\leq 3 dB
Stopband attenuation at fc \pm 1.85 kHz: at fc \pm 2.3 kHz:	13 \pm 2.5 dB \geq 60 dB
Ultimate attenuation (except spurious) from fc \pm 3.5 kHz to fc \pm 500 kHz:	\geq 100 dB
Maximum input power: Continuos input power:	10 mW \leq 1 mW
Termination Input: Output:	400 Ω \pm 10 % // 30 pF \pm 6 pF 400 Ω \pm 10 % // 30 pF \pm 6 pF
Temperature ranges Operating: Operable: Storage:	0°C ... + 50°C -10°C ... + 60°C -40°C ... + 90°C

2. Environmental conditions

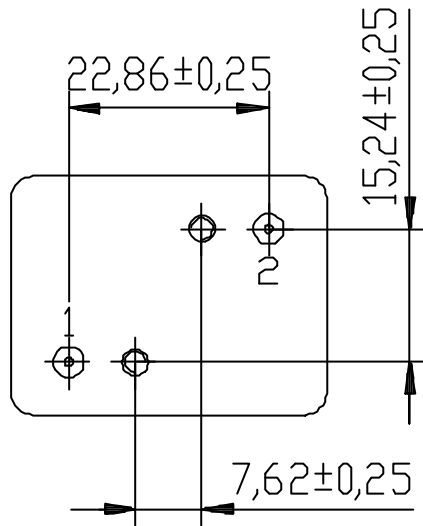
According to KVG Product Qualification Procedure AA-QM-200

3. MarkingManufacturer's name, date code(week/year)
Specification

4				KVG Quartz Crystal Technology GmbH Waibstadter Str. 2 - 4 D-74924 Neckarbischofsheim Tel. +49 (0) 7263 / 648-0 Fax. +49 (0) 7263 / 6196
3				
2	Input power	6.11.96	G. Schuster	
1		22.02.80	B.Neubig	
ED	Description	Date	Name	

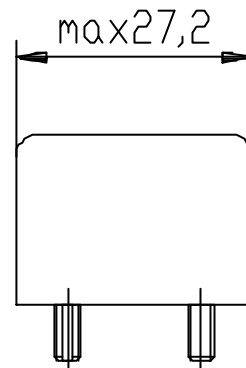
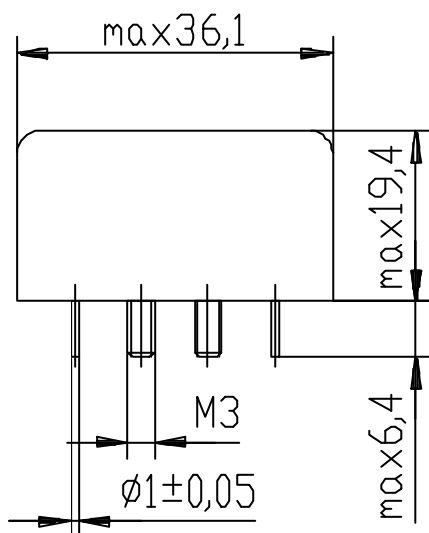
4. Case

Case style: BF1



DIN IEC 49(CO)208
Typ F01

1 = IN
2 = OUT



All dimensions are in millimeters

4				KVG Quartz Crystal Technology GmbH Waibstadter Str. 2 - 4 D-74924 Neckarbischofsheim Tel. +49 (0) 7263 / 648-0 Fax. +49 (0) 7263 / 6196
3				
2	Input power	6.11.96	G. Schuster	
1		22.02.80	B. Neubig	
ED	Description	Date	Name	