

UI-Board BOTTOM / Unterseite

STM32F40x-VG (U4)

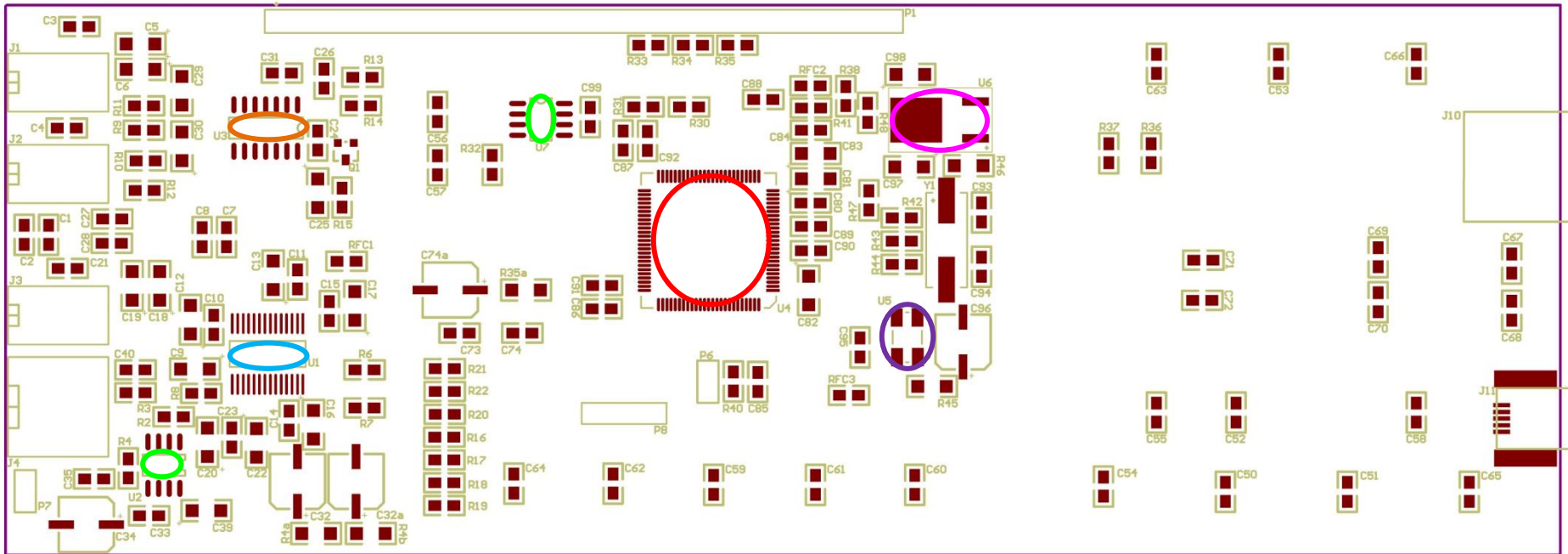
WM8731 (U1)

LM386M-1 (U2)

1 pieces/Stück

1 pieces/Stück

1 pieces/Stück



74HC4066 (U3)

FOX924B (U5)

24LC01B (U7)

KF33BDT (U6)

1 pieces/Stück

1 pieces/Stück

1 pieces/Stück

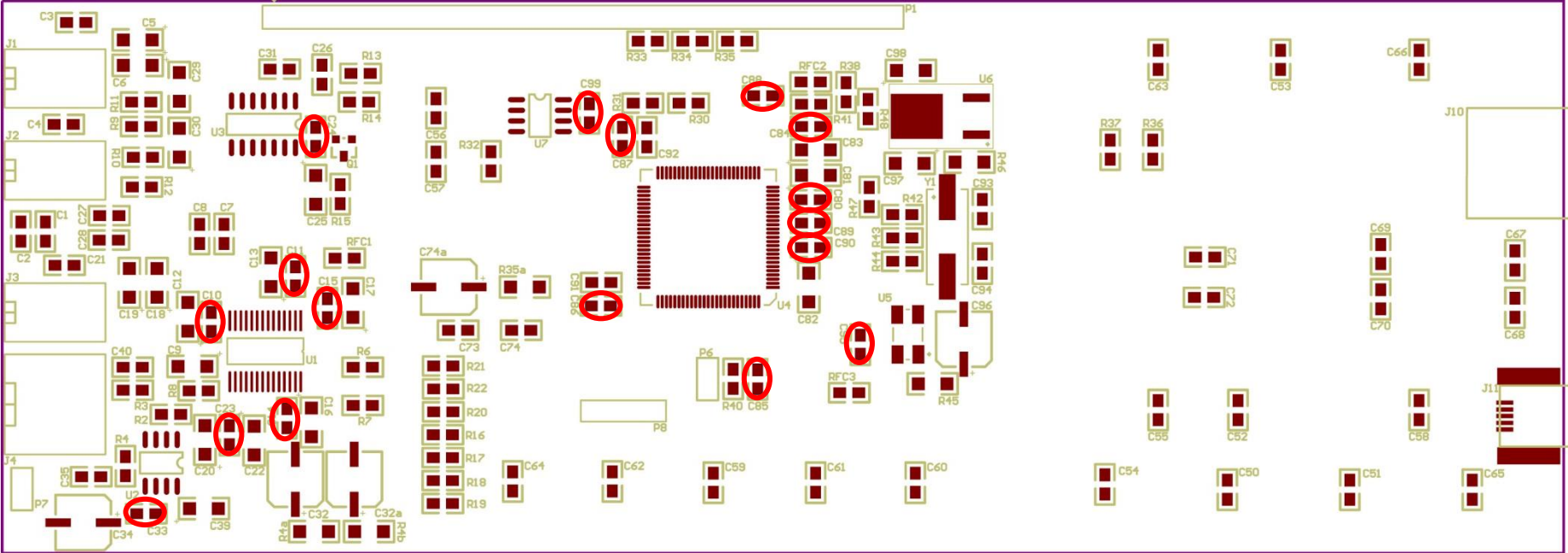
1 pieces/Stück



UI-Board BOTTOM / Unterseite

100nF

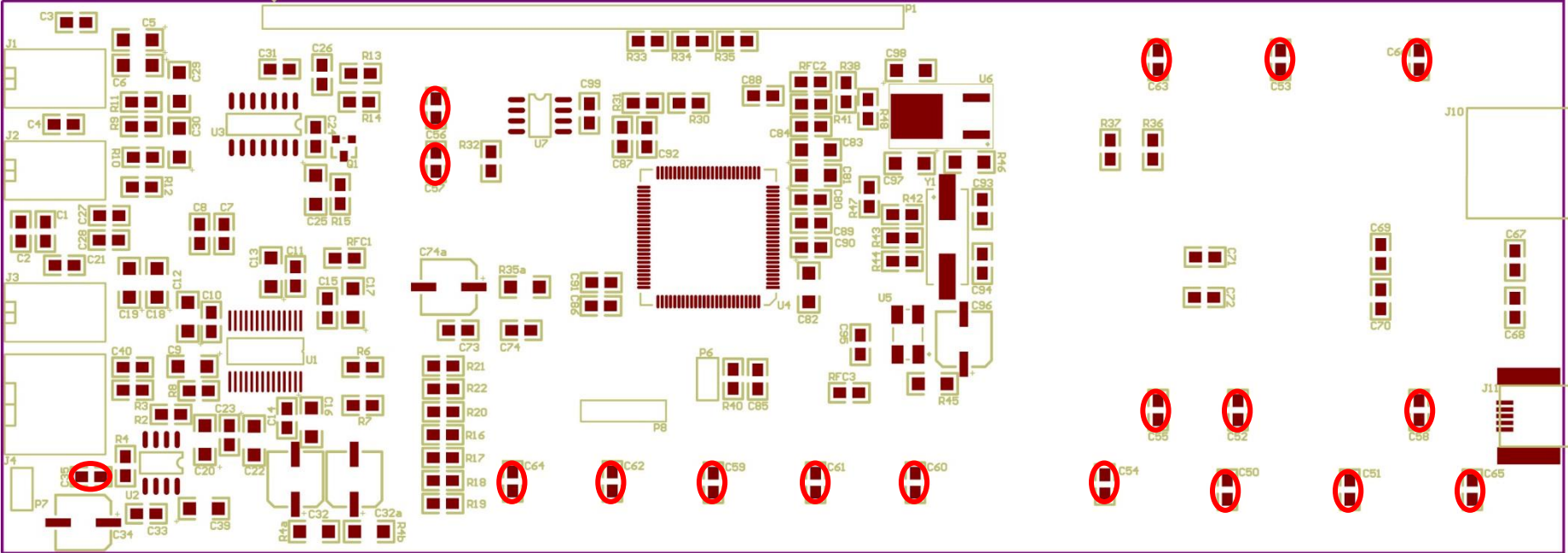
17 pieces/Stück



UI-Board BOTTOM / Unterseite

47nF

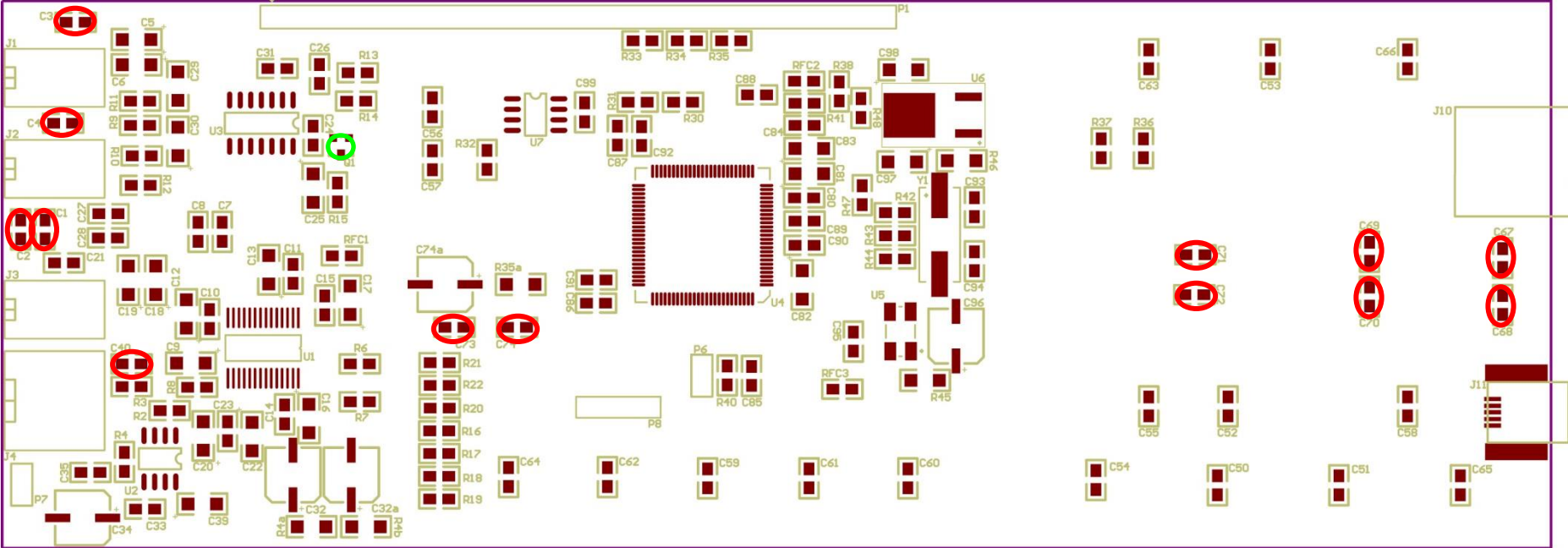
18 pieces/Stück



UI-Board BOTTOM / Unterseite

1 nF

13 pieces/Stück



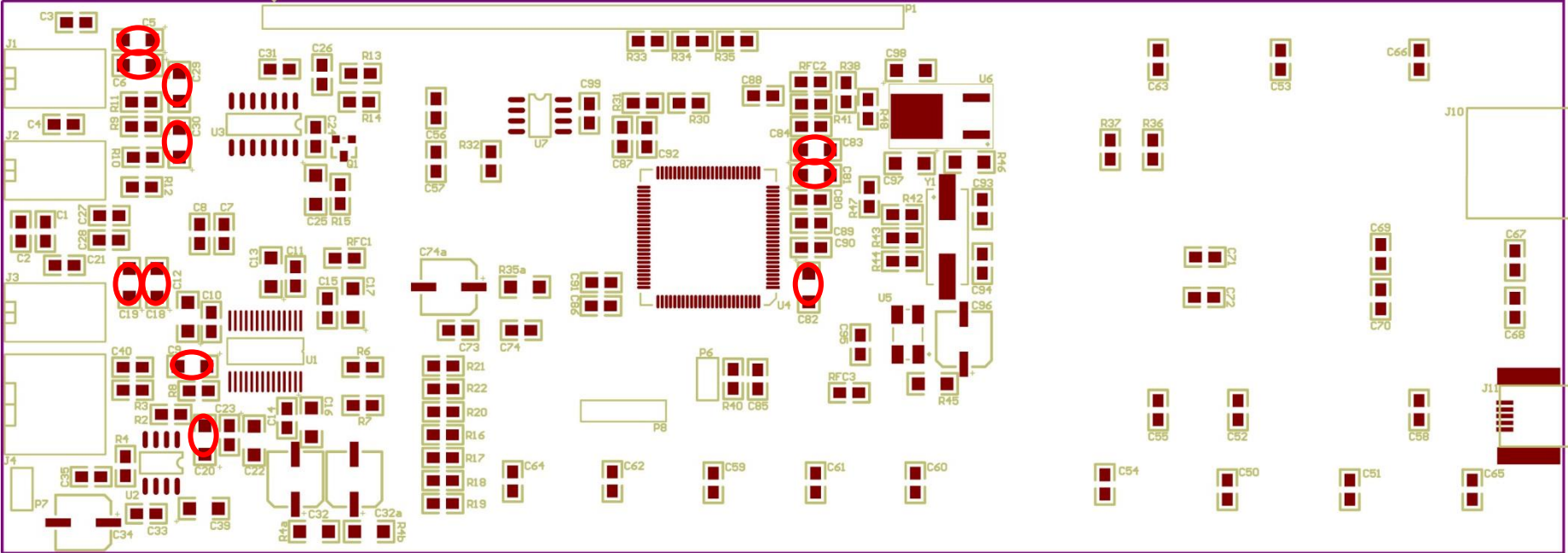
Q1 (NDS356AP)

1 pieces/Stück

UI-Board BOTTOM / Unterseite

1 μF

11 pieces/Stück



UI-Board BOTTOM / Unterseite

0 Ohm

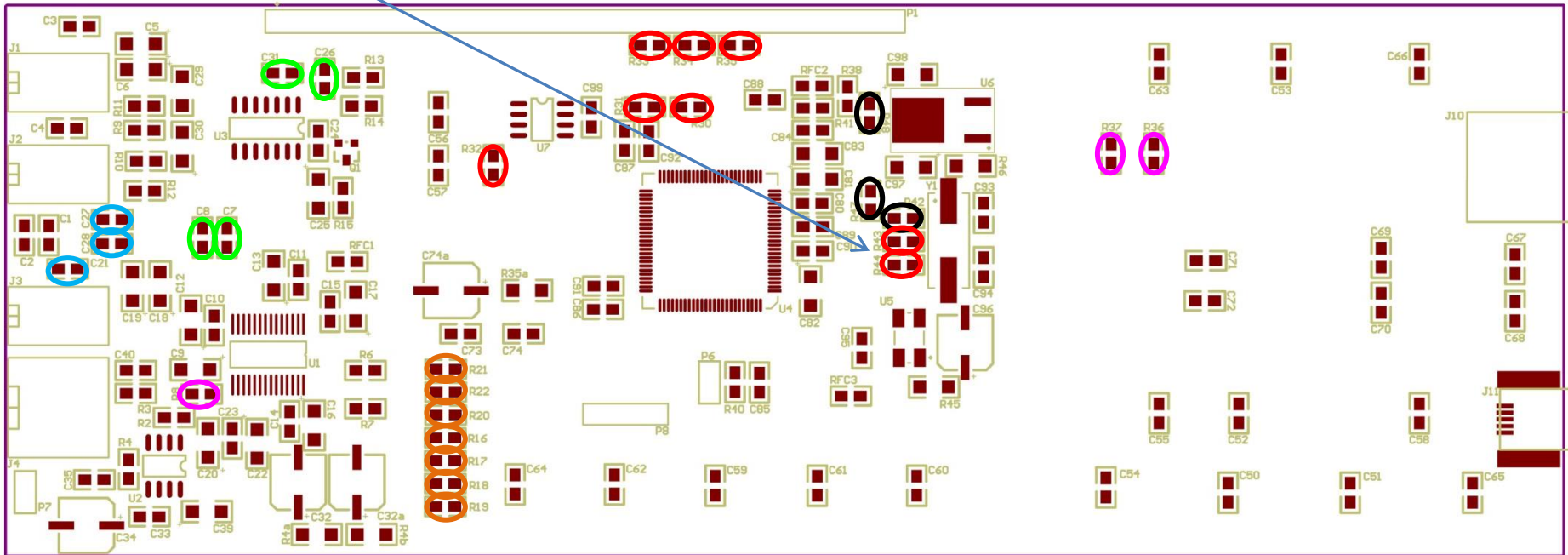
6 ~~8~~ pieces/Stück R42 u. R43 entfallen

220 pF

3 pieces/Stück

470nF

4 pieces/Stück



100 Ohm

7 pieces/Stück

220 Ohm

3 pieces/Stück

680 Ohm

3 pieces/Stück



UI-Board BOTTOM / Unterseite

1 K

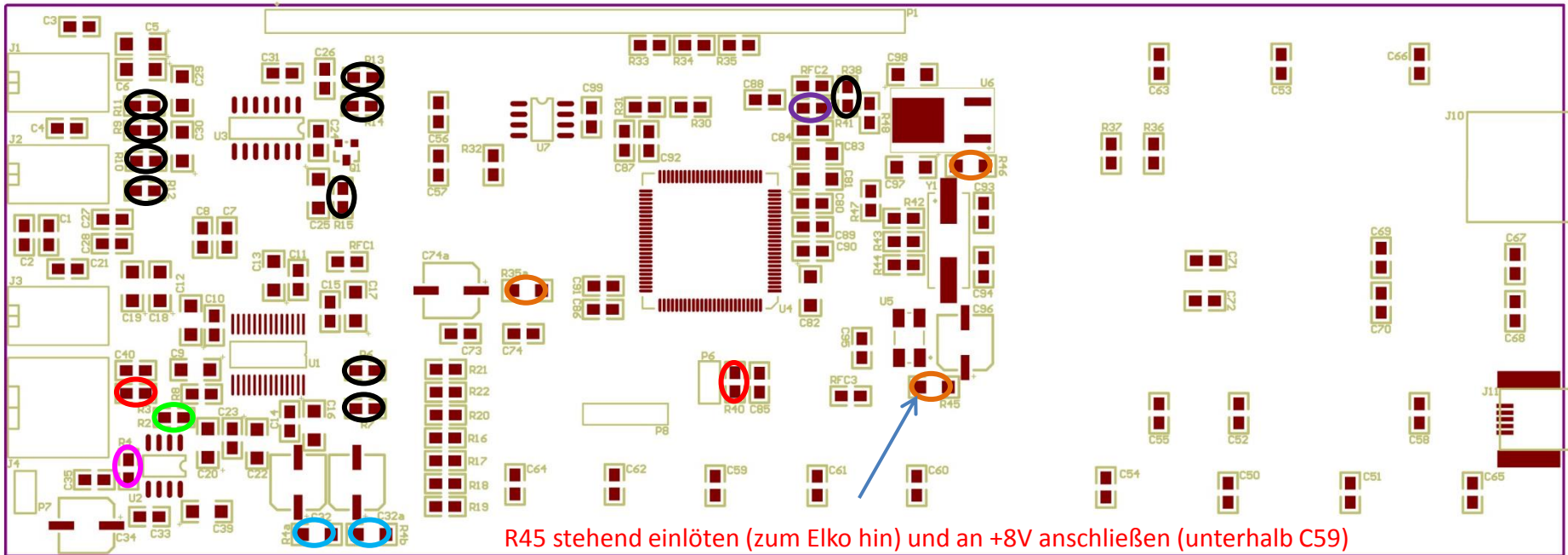
2 pieces/Stück

2.2 Ohm

2 pieces/Stück

2.2 K

1 pieces/Stück



4.7 Ohm

3 pieces/Stück

47 Ohm

1 pieces/Stück

4.7 K

10 pieces/Stück

10 Ohm

1 pieces/Stück

UI-Board BOTTOM / Unterseite

2.2 μF

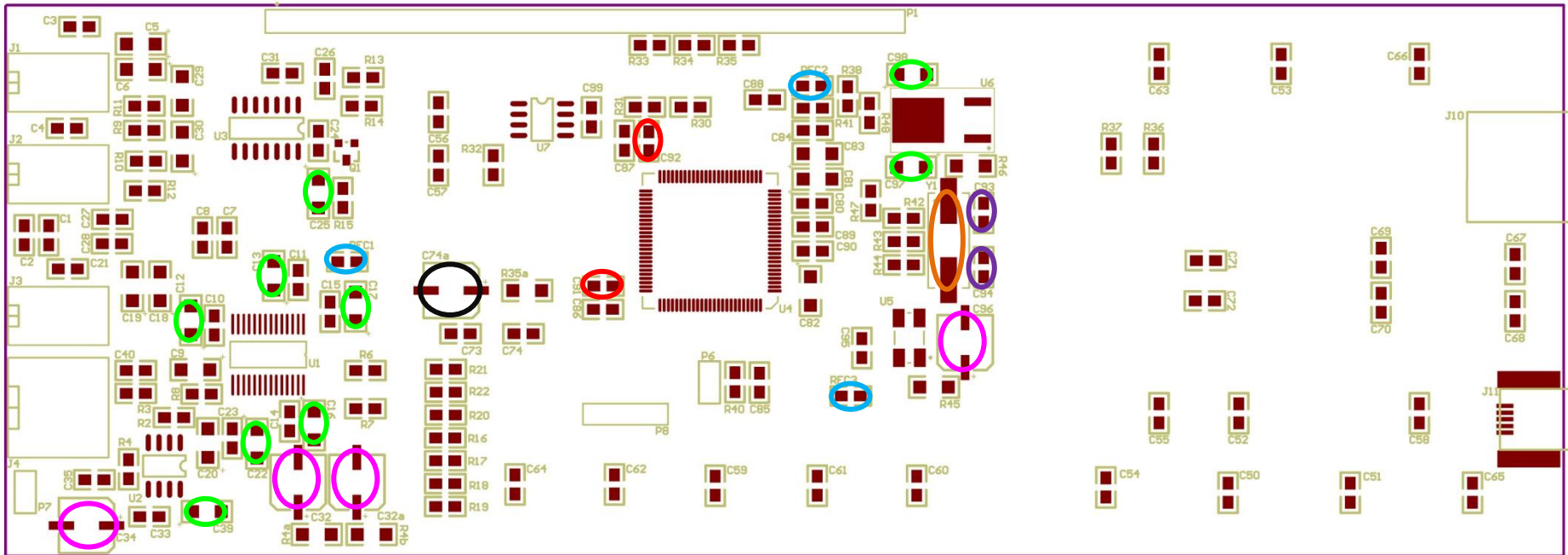
2 pieces/Stück

4.7 μH

3 pieces/Stück

10 μF

9 pieces/Stück



~~**16 MHz**~~

~~1 pieces/Stück~~

~~entfällt~~

~~**20 pF**~~

~~2 pieces/Stück~~

~~entfällt~~

100 μF

1 pieces/Stück

Achtung Tantal Typ
einsetzen K08Mod. #17

220 μF

4 pieces/Stück